



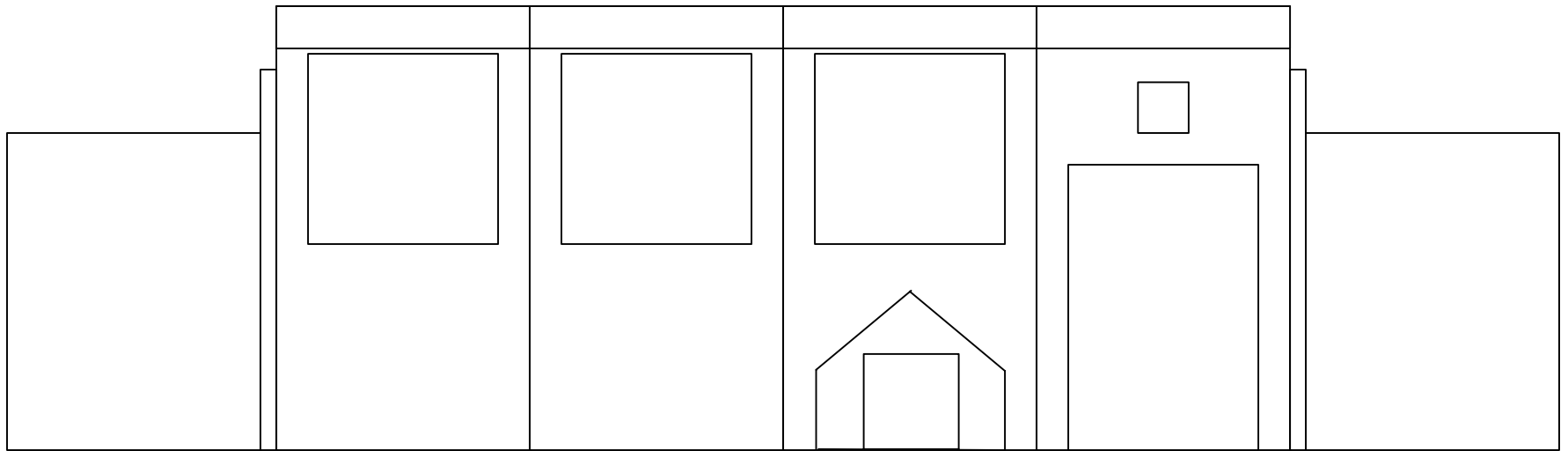
Spring, Texas

FIRE PREVENTION PUPPET SHOW STAGE ILLUSTRATION

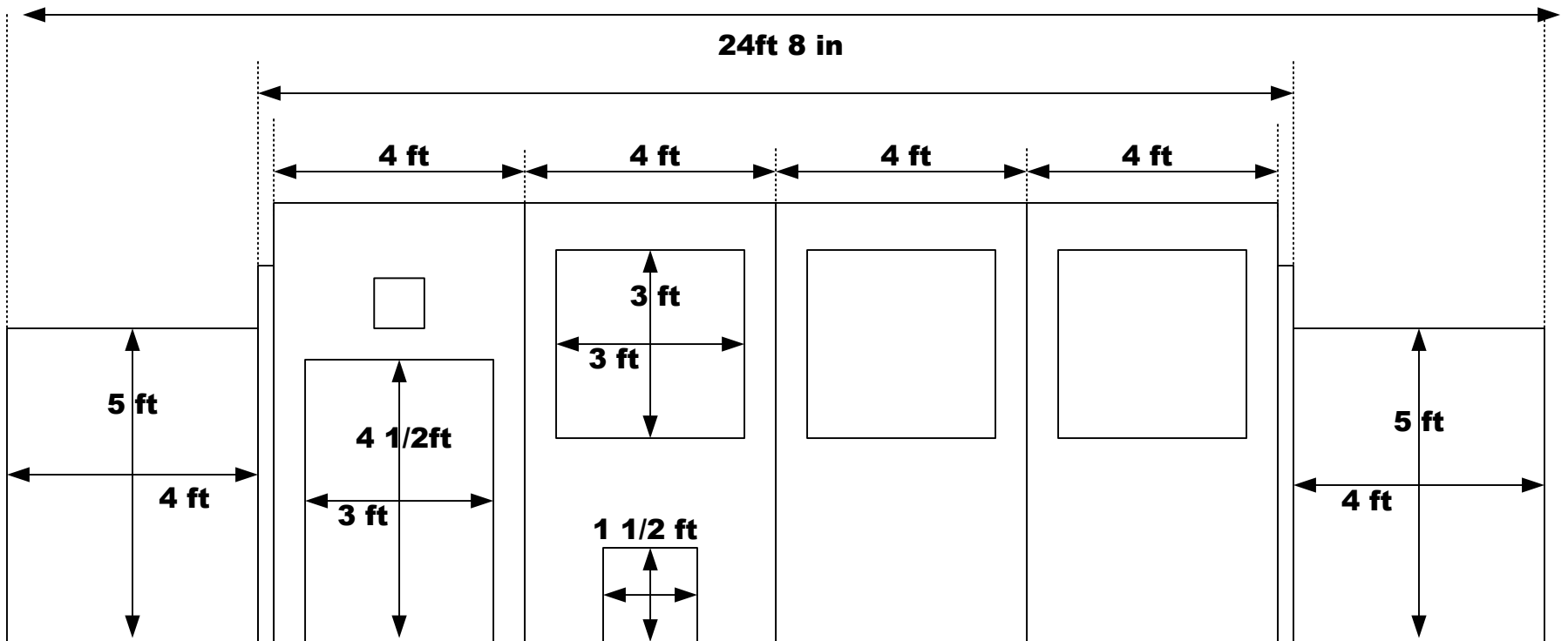
This is our 3rd stage design since beginning our puppet program in 1995. Our current design allows for just half of the stage to be set up in smaller daycare facilities.



**335 VOLUNTEER LANE SPRING, TEXAS 77380
WWW.SMCVFD.COM (281)363-3473**



Front



BACK

Actual dimensions of stage. To accommodate low ceilings
16 X 7 X Min 6 ft or 24 X 7 X Min 6 ft



Doghouse door opens for puppet interaction double doors open (saloon door style) to allow fire truck robot out.



Back side – White strips of Velcro are at top to adhere see thru curtains.



Second panel without added doors. Standard door hinges use for easy of folding.



Utilize fence as our side/back brace.
The three windows allow for up to 6 people with puppets on both arms.



Looking through the black curtains you can see shapes of people but they can't see you. A "confetti fabric" in black is used for this effect.



Shelves allow for armrest for puppeteers.



Sound box rear storage for microphone stands and extra cables.



Complete sound system contains a 12-channel sound mixing board, Single disc CD player, Dual cassette player plus space for expansion and storage.



Puppets box in transporting mode.



Puppet box holds 20 full size puppets on single dowel rods lower storage areas for speaker stands and props.
Fold out shelves for easy removal of puppets.